

FACILITIES BEING ESTABLISHED

- CT SCAN (Trauma Center)
- UPGRADATION OF EMERGENCY
- ICU
- CCU
- DIALYSIS
- PHYSIOTHERAPY
- BURN UNIT
- DENTAL UNIT
- LAUNDRY
- MORTUARY
- YELLOW ROOM
- WATER FILTRATION PLANT
- CANTEEN

SERVICES TO BE OUTSOURCE

- MEP
- JANITORIAL
- PARKING & SECURITY
- CAFETERIA
- AC's & GENERATORS
- LAUNDRY
- CT SCAN
- PATHOLOGY LABS
- HORTICULTURE

THEMATIC AREAS OF MSDS

- 2.1 ACCESS, ASSESSMENT, AND C.ONTINUITY OF CARE (AAC)
- CARE OF PATIENTS (COP)
- MANAGEMENT OF MEDICATION (MOM)
- PATIENT RIGHTS AND EDUCATION (PRE)
- HOSPITAL INFECTION CONTROL (HIC)
- CONTINUOUS QUALITY IMPROVEMENT (CQI)
- RESPONSIBILITIES OF MANGEMENT (ROM)
- FACILITY MANAGEMENT AND SAFETY (FMS)
- HUMAN RESOURCE MANGEMENT (HRM)
- INFORMATION MANGEMENT SYSTEM (IMS)

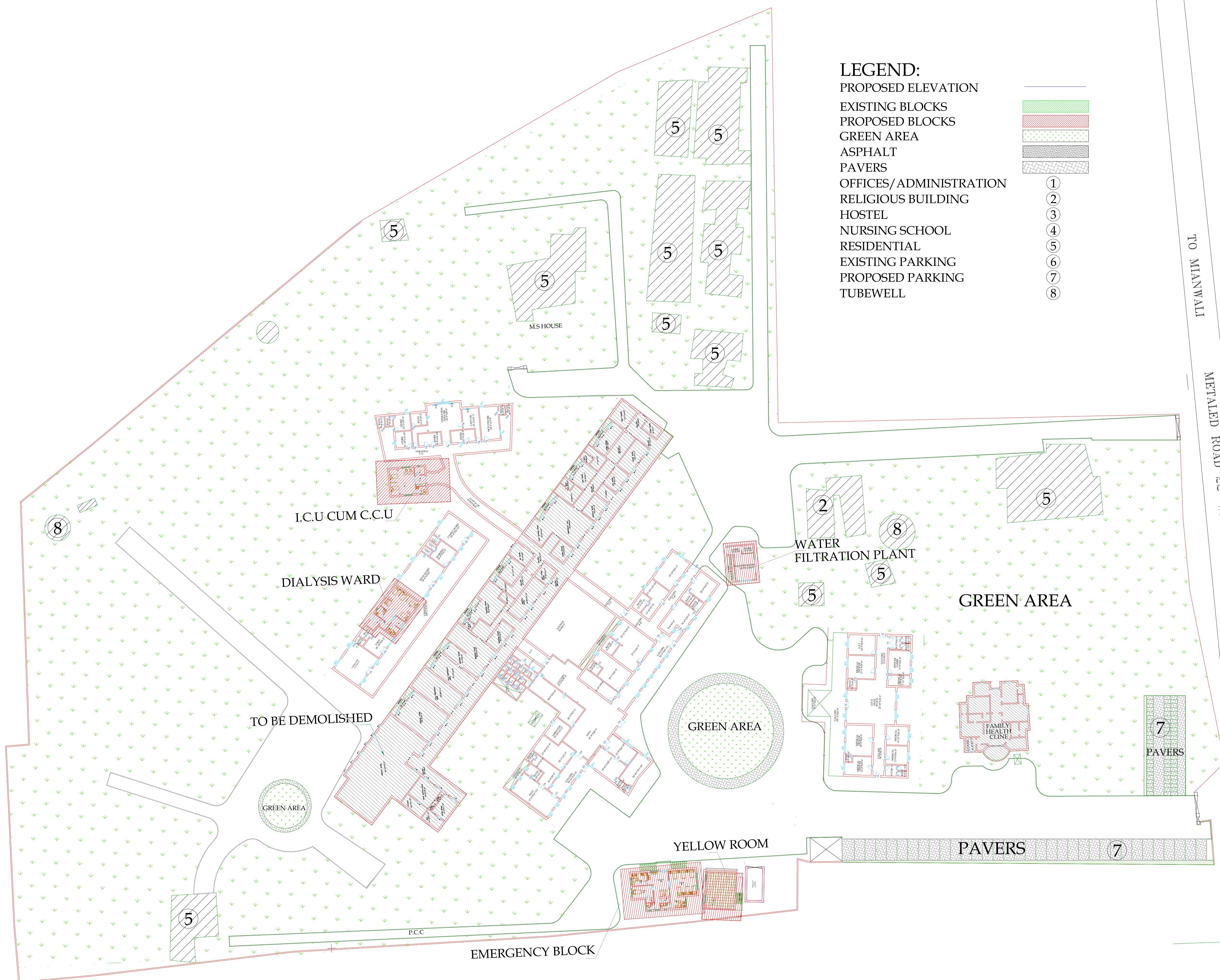
IT INTERVENTIONS

- QUEUE MANAGEMENT SYSTEM
- ELECTRONIC MEDICAL RECORD

NEW MANAGEMENT STRUCTURE

- NMS
- CONSULTANTS
- NURSES
- WMO's
- EMO's
- AHP
- PHARMACISTS
- PHYSIOTHERAPISTS

BY:
PROJECT MANAGEMENT UNIT
PRIMARY & SECONDARY
HEALTHCARE DEPARTMENT
GOVT. OF PUNJAB



LEGEND:

PROPOSED ELEVATION

EXISTING BLOCKS

PROPOSED BLOCKS

GREEN AREA

ASPHALT

PAVERS

OFFICES/ ADMINISTRATION

RELIGIOUS BUILDING

HOSTEL

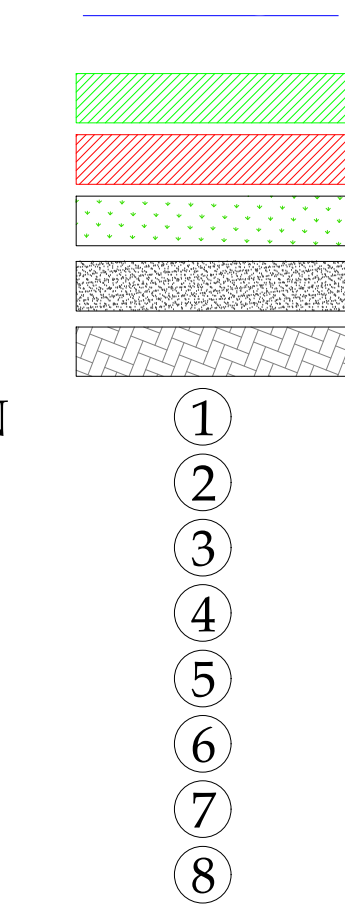
NURSING SCHOOL

RESIDENTIAL

EXISTING PARKING

PROPOSED PARKING

TUBEWELL



MACHINERY & EQUIPMENTS

Area	Name of Equipment	
Emergency Equipment	Table	
	Chairs	
	Computer Data Entry With Printer	
	Table (2.5 X 4.75)	
	Chairs (10)	
	B.P apparatus with tape (10)	
	Gamma with FOOT STEP (10)	
	Mercury B.P apparatus (10)	
	Lampshade paras (as per spec) (10)	
	Diagnostic set (10)	
Triage area	ECG Machine with trolley (10)	
	Central oxygen with accessories (200 each)	
	NEBUZIZER HD (10)	
	SUCKER MACHINE (10)	
	CRASH TROLLY EQUIPED (10)	
	RESTRAINT CABINET (10)	
	MEDICINE TROLLY (10)	
	O Table With foot step	
	Center Oxygen supply (10)	
	Bunker machine	
Minor O.T	Portable O.T Light	
	Ceiling o Light	
	Hot air oven	
	Autoclave	
	Instrument trolley (10)	
	Instrument cabinet	
	GUN (10)	
	Sucker machine (10)	
	Refrigerator HD (10)	
	Center Oxygen supply (10)	
Constant/ specialized care room	Resuscitation Trolley fully equipped (10)	
	Defibrillator (10)	
	Plasma separator (10)	
	Beside monitor (10)	
	ECG MACHINE (10)	
	BP APPARATUS (10)	
	FOOT STEP (10)	
	ATTENDANT BECH (10)	
	(MOTORIZED BEDS) with accessories (with foot step) (10)	
	ECG machine with trolley (10)	
Emergency ward	Beside monitor (10)	
	B.P apparatus with tape (10)	
	Refrigerator HD (10)	
	Sucker machine (10)	
	Wheel chair (10)	
	Shelker (10)	
	ambu bag adult with Mask (10)	
	ambu bag adult with Mask (10)	
	Portable x-ray (300 M.A)	
	Respirator (10)	
Others	Shoe Cover Machine	
	Vein Finder	
	Acetic Energy Board	
	Medical Equipment	
	Area	Name of Equipment
	Laboratory	Semi Auto Clinical Chemistry Analyser
		Hematology Analyser
		Electrode Analyser
		Blood Cell Analyser
		Clinical Microscope
Water Bath		
Hot air Oven		
Autoclave		
Auto pipettes		
glass ware		
X-Rays	Centrifuge Machine	
	Mobile X-Ray Machine	
	Computed Radiography System	
	Diap X-Ray	
	Lead apron and PPE	
	Dental metal personal (I/As)	
	Lead glass shield	
	Lead table	
	Portable/Mobile Ultrasound	
	Color Doppler RADIOLOGY	
Ultrasound	Color Doppler RADIOLOGY	
	Color Doppler	
	Temporary pace maker	
	Defibrillator	
	ECG Machine Three Channel	
	ECG Machine	
	Color doppler RADIOLOGY	
	Blood Cabinet	
	Blood Machine	
	Slice scanner	
CCU	Clinical Microscope	
	Computed Home Dialysis Machine	
	Basin Cabinet	
	Phototherapy Unit	
	Plasma Colector	
	Infant Incubator	
	Humidifier Nebulizer Heavy Duty	
	Anesthesia Machine with Ventilator	
	BED SIDE PATIENT MONITOR	
	ICU Monitor	
Nursery	Defibrillator	
	Defibrillator	
	Electrocardiogram Unit	
	Operator Table	
	Ceiling Operating Light	
	STIMULATOR	
	Resuscitation trolley With Crash Cart	
	Infant table	
	Mobile O.T. With Light	
	Operation Table	
O.T (04)	ORTHOPEDIC DRILL	
	Pneum. Coffin Pneumatic	
	Pneumatic Tortoise	
	Orthopedic Instruments	
	Portable/Mobile Ultrasound	
	Autoclave	
	Delivery Set	
	Delivery Table	
	ICU Monitor	
	D. S. C. Set	
Gynae (20 beds)	Vacuum Extractor	
	CTG Machine	
	ECG Machine Three Channel	
	delivery table Lights	
	Basin Cabinet	
	Delivery trolley	
	Developer Fetal Heart Rate Detector	
	Swarm Sterilizer	
	Operation Table	
	Surgical Emergency (10 beds)	MOBILE OPERATING LIGHT
Suction Pump		
Leid glasses		
Set of Surgical Instruments		
Shelker		
wheel chair		
foot support		
Resuscitation trolley With Crash Cart		
Resuscitation trolley With Crash Cart		
BP Apparatus		
Ventilator		
CPAP		
X-RAY PROCESSOR		
Hand wash Sink Double Bay		
Refrigerator		
Central Medical Gas Pipe Line System		
Refrigerator glass single Door		
Dialysis Machine		
CCTV Camera top dome		
Cleaning Machine		
CCTV camera		
Stoves		
DVR for CCTV Camera		
Sound System for announcements		
Fire Extinguishers		
LED TVs		
Machinery and Equipment (General)		
Area	Name of Equipment	
Others	Refrigerator(Domestic) front glass double door	
	Refrigerator glass single door	
	Air Curtain On Door	
	Washing machines for panties	
	Gas Burner for panties	
	Fire Extinguishers DCF	
	LED TV	
	4 Ton air conditioners (Cabinet)	
	2 Ton air conditioners (Cabinet)	
	2 Ton air conditioners split	
Ceiling Fans 50"		
Bracket Fan 10"		
Internet Ethernet		
Refrigerators 1.5 CFT		
Dual Connection of Electricity / Express Line		
Electronic Distribution Boxes		
Protection cabin for electricity distribution boxes		
Bed Sheets and pillow covers		
Pillow		
Blankets with covers		

MASTER PLAN OF THQ HOSPITAL ISA KHEL